

## TRAIL CREW NOTES

19 February 2024

Location: Lower Big Quilcene (833), ONF

Crew members:

David Graves

Joanne Graves

Hours on job: 14

- Objective(s) for the day:
  - Scout 6.25mi from lower to upper (Marmot Pass) trailhead (12.5mi RT)
  - Remove any small fallen trees from hiker corridor.
  
- Task(s) accomplished:
  - Trail scouted successfully from lower to upper trailhead.
    - Removed one 10" tree across the trail about ½ mile from lower trailhead and one 6" tree just above re-route.
    - Made short-term fixes to two water crossings to get stream flow off the trail.
    - Investigated where stream is flowing under the trail. Wood box culvert is not holding the water and sinkholes are being created.
    - Trail was snow covered roughly ¼ mile from lower trailhead to upper trailhead.
    - Seven trees (ranging from 18-30" are across the trail. The trees, mostly located between Camp Jolley and the upper trailhead, are snow covered and generally frozen into the ground. This, combined with the wet hiking to reach them, led to postponing the February 21 trail crew.
    - Area of fallen debris on trail; partially cleared by hikers
  
- Task(s) remaining:
  - Reschedule work crew(s) once snow has cleared.
  
- Notes
  - Notify USFS of likely blocked FR2740 to Tunnel Creek trail. Looking down on FR2740 from LBQ trail, it appears a cluster of trees and rootball have fall on/across 2740.
  - Work with USFS on removing risk of trail collapse from water eating away under the trail.
  - Hikers/others continue to re-open old riverside trail rather than taking reroute. Logs/brush used to block old trail have been tossed down the hillside. We installed new branches across trail to indicate closed trail, but we likely need to decommission the old trail and replant the ends of it with ferns, (devils club?), etc.. Trail has not yet fully washed away but down to 6" width above river in spots.



Blocked FR2740 to Tunnel Creek trail

Water running under the trail around wood box culvert. Creating sinkholes.



small feline trail user



Trees still to remove (from lower to upper end of trail)

1) On reroute



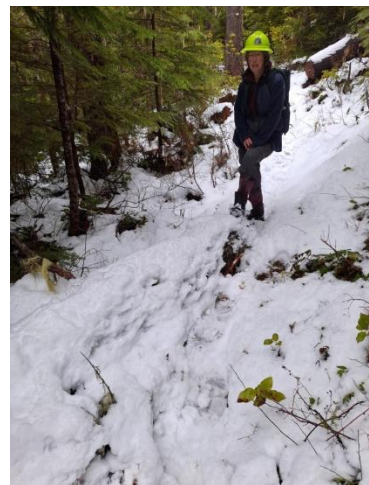
2) ~1/2 mile below Camp Jolley



3) 50' up trail from 2)



4) 1/4 mile from upper trailhead



5) & 6) 50' above 4)



7) ~100yds above previous (rotten)



Plus another 14" under the snow and across the trail.