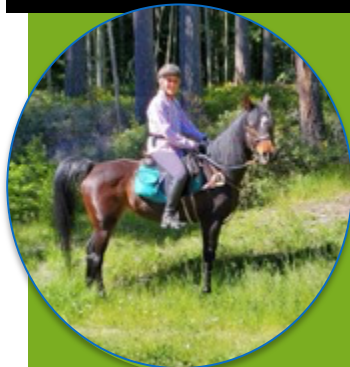


Spring 2024

Trail Crafters News

Olympic Peninsula, Washington



Happy Trails!
Nicole Witham soon will
be the new editor soon!

Back Country Horsemen of Washington (BCHW), is a 501 (c)(3) organization with 31 chapters across the state dedicated to: keeping trails open for all users; educating horse users in Leave-No-Trace practices; and providing volunteer service to resource agencies.

Special Interest Articles

- Frosty Moss Pgs. 2
- Trail Work Pg. 3
- Rendezvous Pg. 4
- Dung. Rec. Pg. 5
- OAT Bridge Pg. 8
- Calendar. Pg. 9

Highlights:

- | | |
|--------------|----|
| Contact Info | 11 |
| Membership | 11 |
| Thank You! | 12 |

PENINSULA CHAPTER BACK COUNTRY HORSEMEN OF WASHINGTON

PO Box 451, Carlsborg, WA 98324 visit us on FB peninsulabchwchapter@gmail.com

Peninsula Chapter's New Website: www.pbchw.org (New photos, maps, past Newsletters, Calendar, and other information are being added frequently.)

Upcoming Events: May 18, "Rhody Ride" / June 1, Youth Trail Clinic at Sage Camp
(There is a new Calendar on the website. Click the date of any event to see more.)

Newsletter Editor: Donna Hollatz jdhollatz@gmail.com

President's Message - May 2024

Summer is almost here, and with it comes a season of many Chapter events. Please check out our calendar on the website for trail work opportunities and upcoming events: the second Youth Trail Camp, a Chapter Campout at Sage Camp, a Camping trip to the Humptullips, and finally, our major fundraising event, the Prize Ride. Please note that the Prize Ride generates income to support all chapter activities and operating expenses. Help from our members always makes these events more successful.

SAVE THE DATE!! July 13-14 we will have a trail work party at Sage Camp. We will be working on a new trail (named in honor of Del) that will help eliminate some of the road riding. Please contact me if you can be part of this important event.

Thank you all for continuing to be part of the Peninsula Chapter and its many successes.

Theresa
President,

Guest Speakers from ONP



Olympic National Park Superintendent, Sula Jacobs, and Trail Supervisor, Nathan Forrest, were guest speakers at the General Meeting on May 15th. They gave an overview of important happenings in the Park and explained how projects are planned about 5 years ahead, but then nature does things that are unplanned, and must be addressed! Both were passionate about stock access in the park as that it is the only way trail work can be accomplished in the huge area. The Park currently has 38 mules and 4 Packers who supply trail crews during the busy summer season.

Frosty Moss Relay – March 16, 2024

by Donna Hollatz

Peninsula Chapter erected a wall tent and had healthy snacks and refreshments ready at a Relay Exchange Station at the Dan Kelly Trailhead for Frosty Moss runners. Teams meet their “runner” at this point and drive them across the Elwha bridge, where the next runner will continue the race. We usually have a wood stove going and an extra canopy set up, but it was a sunny and warm day, so the extra resources were not needed. Kat and Tony Sample brought their mini horse and donkey who are always a hit for photo opts with runner teams. One of the coordinators later sent this message to Kim Merrick:

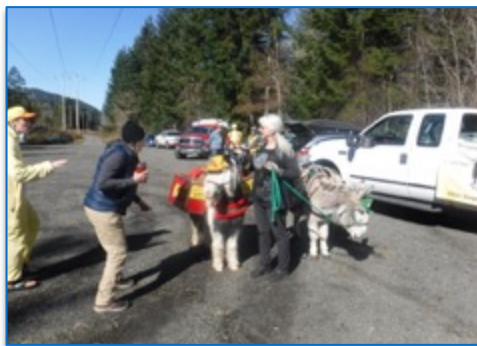
“I want to share a big THANK YOU to the Back Country Horseman for once again being such a great exchange site in the middle of the long Frosty Moss Race. The food is always wonderful and the animals are such a hit with everyone. It's like a fun oasis in the middle of a grueling day. Please pass on to your crew how much I have appreciated their efforts.” Michell Gentry

Our community service efforts, such as this, are very important as they help promote our organization and make community members aware of the work we do to maintain trails for all users.



Photos
from
Frosty
Moss

by
Donna
Hollatz



Harley & Murphy with some fans!



Linda Morin keeps the coffee brewing!

“Thank You” to Volunteers for Frosty Moss: Teresa Crossley, Dan Dosey, Judy Dupree, Leif Hoglund, Jim & Donna Hollatz, Rick & Suzanne King, Kayla Kosel, Tom Mix, Linda Morin, Tony & Kat Samples. We could not provide these services without your help!

Spring Trail Work at Miller Peninsula

by Donna Hollatz

The winter season always bring its share of wind, and the trails at Miller Peninsula State Park take a beating with downed trees blocking the trails. Several work parties were held to clear obstacles, some using horses to pack the chainsaw, and some managed with “walk-in” hikes when the blow-downs could be reached with a short hike from a road. A big “thank you” to the chapter members who turned out to help with this important work.

Photos by Judy Dupree, Jim & Donna Hollatz



Sandy Ihly training on the chainsaw.



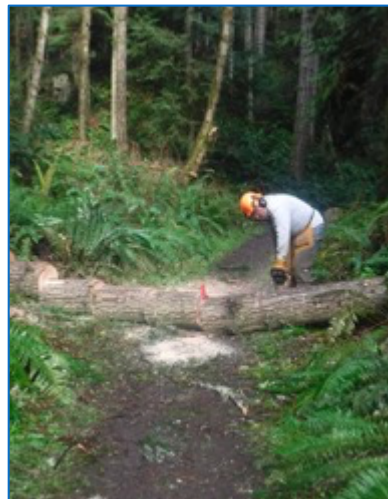
February 5, 2024



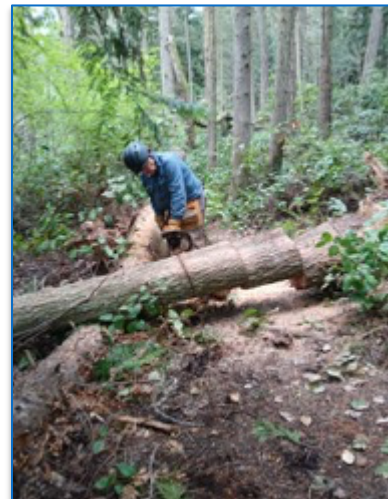
Pack bags must be equal weight.



Sandy Ihly, March 7, 2024



Beach Trail, March 26, 2024



Bluff Trail, May 13, 2024

Thank You to the Volunteers!

Judy Dupree, Sandra Ihly, Mariah Bradfield, Rick & Suzanne King, Jim & Donna Hollatz



Rendezvous – March 17-18, 2024 – Ellensburg

by Donna Hollatz

Our table centerpiece at Rendezvous was dedicated to Del Sage, our longtime member who helped build the chapter with his rigging, chainsaw work, and packing skills. He was always willing to help with big trail projects and his “Sage Horse Camp” is a gem of the Olympic Peninsula for horse camping.

Members attending were Theresa Percy, Jeff Chapman, Juelie Dalzell, Kris Phillips, Judy Sarles, Nicole Witham, and Joan Wildman. Members were able to take part in the wonderful dinner, plus First Aid and CPR training and a packing clinic. The event was deemed a success by everyone present.

(Photos by Joan Wildman)



Melissa Board, DVM - Speaker for Meeting, March 20th

by Donna Hollatz

Dr. Melissa Board, DVM (our local Sequim Equine Practitioner) gave a very interesting presentation on Equine Dentistry at our General Meeting at the Gardiner Community Center. She explained many details about how a horse's teeth grow and why dental care is so important to our animal's wellbeing. Many of us who have had horses for years, learned new facts about dentition as she explained the changes that take place as a horse matures, from foal teeth to permanent teeth, to the final stages of life where the teeth begin to fall out and special food considerations must be made to provide adequate nutrition. She also demonstrated the modern dental tools she uses to “float” the teeth to remove uneven spots that develop as horses chew their food.



Photos
By
Theresa
Percy



Dungeness Recreation Area – Equine Trails – Spring 2024 by Donna Hollatz

Early in 2024, Clallam County Parks brought a recommendation to restrict horses from the Voice of America Trails because the campground must be moved south due to Bluff erosion, and there had been some hiker/horse conflicts as the park became more crowded. Several BCHW members attended the CC Parks Advisory Board meeting, where it was being considered, to represent the horse community about the long history of equestrians using the park and the past efforts expended by BCHW members in building the equestrian trails. The Advisory Board choose to continue to allow equestrian trails and asked for a renewed partnership between the Parks and BCHW.

A number of planning meetings occurred whereby Tom Mix and Judy Sarles from BCHW met with Don Crawford, Parks Director, and Park Ranger John Graham to discuss the visitor issues and how BCHW might help reduce or minimize some of them. Everyone was focused on visitor safety and enjoyment of the Recreation Area. Concerns expressed by Ranger Graham were:

- Hiker, bicycle, stock interactions at the hitching rail area at the dead-end stock trail.
- Equestrians traveling off designated trails and riding into the meadows of Rec Area lands or through the campgrounds,
- Riders crossing over onto neighboring private properties and riding the grasslands.
- Riders not practicing their LNT with stock waste either at the stock rig parking area or on trails.
- Trail maintenance staffing: Currently the County Thursday Crew is scheduled to visit the Rec Area about every 6 to 8 weeks. The park has about 4 miles of trails.

Tom offered the following to support the Park in addressing the concerns:

- BCHW would construct a small loop trail at the north/east corner of the park, turning the dead end into a nice casual loop to enable a steady flow. Removing the hitching rail at the end of the old Spit access trail to discourage riders from stopping. This would greatly reduce hiker-stock interactions at a very busy intersection with very little stock maneuvering space.
- BCHW provide 3S signs (3S is Stop-Stand and Speak) and LNT (Leave No Trace) regarding stock waste to remind trail users (both hikers and equestrians) of the rules, and install white-topped posts to better reassure riders that they are on a stock trail.
- Tom offered that we may be able to periodically provide a trained and equipped trail crew to assist with corridor and tread efforts on stock trails.

On March 15th, Tom and Jim and Donna Hollatz, with the approval of Ranger Graham, looked over the area near the dead-end trail and flagged a short loop that would allow a group of riders to make an easy turn back to reverse direction along the equestrian trail route and planned for what was needed.

On March 29th, BCHW volunteers (Tom Mix, Bill and LaVonne Mueller, and Jim and Donna Hollatz) took tools and built the new loop trail. The Volunteer Host brought the Park tractor and assisted with the project. Overhead branches were removed to a 12-foot height, tread was established on the new trail, the hitching rail was removed, and new signage was installed to direct riders to the loop for a turn-around. Jim, Tom, and Donna also installed a new white topped post that was needed along another equestrian trail to help guide riders.

The County Parks was impressed by BCHW's energy, expertise, and quick execution to assist in improving the Voice of America's trail.

BCHW Peninsula Chapter will continue to meet with the Parks District Director on other projects and to educate youth at the Clallam County Fair for Kids Day on August 15th. BCHW is willing to provide continued aid to the County when needed to help maintain equestrian trails. If you are interested in participating in the event, please contact Judy Sarles at 925-984-9654.

Riding Lessons - Spring 2024

by Donna Hollatz

A number of riders find it difficult to get out on their horses during the wet winter months, so this winter Judy Dupree and Judy Sarles organized some group riding lessons to keep everyone engaged with their horses. It is good for human riding muscles and balance to stay in shape and good for our horses to engage their minds and bodies, too. Lessons were held at Fox Bell Farms in Agnew with instructor, Shelby Vaughn, about once a month. In addition, two trail obstacle practice sessions were scheduled, one at Golbeck's Stable and the other at Guy Miller's arena (coming up June 1st). Contact Judy Dupree if interested: 360-460-0175



Lessons at Fox Bell Farm on February 8, 2024

Dutch Oven Cooking Clinic – by Kim Merrick – June 22, 2024 at Sage Camp 1

June 22 – 12pm – 6pm at Sage Horse Camp:

We will be making dinner for Packing Clinic participants. Depending on how many of us are cooking, we may need people to come up to Sage HC and eat dinner.

TOPICS: Basics of Cooking with Charcoal
Cast Iron vs, Hard Anodized
Using Charcoal Effectively
Dutch Oven Accessories
Cast Iron Oven Care
What makes a good Dutch oven dish?

For information or to participate in the Cooking Clinic contact:

ELOISE55@GMAIL.COM / 253-261-6188 / KIM

Report Trail Hazards

Please Report Trail Hazards on Website: www.pbchw.org

If you encounter downed trees or other trail hazards while riding, please report them so our trail crews can address and correct the problem.

- Go to the website.
- Click on “contact”
- Give a description of the problem and where it is located. Be specific: date, which trail, approximately where along trail, size of tree or explain problem. Leave contact information if possible.

The website is monitored daily and this information will allow us to get the information to the necessary workers in a timely manner.

Thank You!

Poem for your Enjoyment

submitted by Juelie Dalzell

A LITTLE WALK

Heard hooves of our horses making moon marks at streamside
 Backpackers waved to us along the way
 we drank the clear smokeless air of late spring in the Olympics
 walked our horses past the big sword ferns at the entrance
 to Littleton Horse Camp on the Mt Muller trail
 took the saddles off, set up tents and left behind
 the tunnel fighting in Gaza, the drone battles in Ukraine, the bitter politics.
 It had all come to this: horses and riders and food--
 the simplicity of riding, the simplicity of carrying our own food
 and our own houses-- we were returning for a moment
 to an ancient way we were returning to ourselves
 being the creators of our daily existence
 savoring the closeness of caring for animals
 savoring the garden that had been neglected within us.
 But at night the talk was the same over the campfire
 the war in Ukraine and Trump and the national debt,
 so I stood up mumbled something and walked down the moonlit path
 to the pole corral my horse came over for one of the treats
 I always carried and gobbled it from my open palm.
 I walked on into the pathless forest getting my face scratched hard by
 the brambly twigs as I stumbled on the mossy roots of the giant firs.
 I wanted to be lost in the basilica of shadows wanted to be blessed by something--
 lay down found peace nestled in the hush of blind, silent needles
 Later wandered the moon-draped meadows--I was shedding the past an unknown a nobody no alphabet
 here was the land without promises a lost home
 At last I returned scratched bruised and revived renewed restored
 I stumbled back into our campground where people were
 still sitting around the fire looked they up at me and I said,
 "I just went for a little walk," but inside I was embracing them
 I was embracing everything

Written by Douglas Macdonald, brother-in-law of Juelie Dalzell

Prize Ride Help Needed: Sept. 7, 2024 at Sage Horse Camp

by Kim Merrick

The 3rd Annual Olympic Spirit Prize Ride will be held at Sage Camp on September 7th! To have a smooth running event we need some on-site help!

Prize taggers & arrangers (2 or 3)

Parkers (1)

Greeters (2)

Camp Host (1 or 2)

Registration & Ticket Sales (2)

Dinner Prep (3)

We will have an organizational meeting April 30th on Zoom at 7pm.

If you would like to help or know more, please attend that meeting or call/email:

Kim Merrick 253-261-6188/eloise55@gmail.com

Olympic Adventure Route – New Stock Bridge

by Donna Hollatz

The OAT Trail is on DNR land west of Port Angeles and is maintained by Clallam County. A stock bridge at milepost 14.5 needed repair, and Peninsula Chapter was asked to help with the rebuilding because it involved harvesting two large trees for “stringer” logs and using rigging equipment to move them to the bridge site. The project required 5 full days of effort by crews of 5 – 15 people. Tom Mix, Rick King, and Jim Hollatz worked with the County crews to accomplish this project. We have a number of members who do not ride, but who do work on these types of projects. Here are some photos of the work. This is a stock trail that is used by equestrians, hikers, and cyclists. The Frosty Moss Relay and the OAT Run (both events we help support) also use this route. This is another example of the cooperation that exists between our chapter and other trail groups.



Photos by
Tom Mix
&
Jim
Hollatz



ANNOUNCEMENT: I hope you have enjoyed the newsletter over the years I have doing the editing. Now I will be passing the torch to Nicole Witham, who has been a member for a couple of years and has an aptitude and desire for writing, advertising, and promotions. Enjoy her trail mementos in future newsletters. Donna

Peninsula Chapter 2024 Calendar of Events by Joan Wildman

January

- 9 **Zoom** Board Meeting, 7pm
- 17 **Zoom** General Mtg. 7pm
Jeremy Reynolds "Conditioning to Win"

February

- 12 Legislative Day in Olympia
- 13 **Zoom** Board Meeting 7pm
- 21 **Zoom** Chapter Mtg. 7pm
Dr. Beau Green: Demystifying Cushings & Insulin Resistance"

March

- 12 **Zoom** Board Meeting 7pm
- 15-17 Rendezvous, Ellensburg
- 16 Frosty Moss Relay (we provide tent)
- 20 **In-Person** General Mtg. 7pm
Speaker: Dr. Mellissa Board, "The Truth About Teeth"
- 23 'Rides of March' Lower Dungeness River Trails

April

- 9 **Zoom** Board Mtg 7pm
- 13 OAT Run
- 17 **In Person** General Mtg. 7pm
Speaker: Adrienne Hendricks "The Root Of All Evil: Ill Fitting Tack"

May

- 4 Dutch Oven Cooking Clinic
- 11 Sequim Irrigation Festival Parade
- 14 **Zoom** Board Meeting 7pm
- 15 **In Person** General Mtg 7pm
Speaker: Sula Jacobs, Supt. ONP
- 17-19 Regional Work Party at LaBar
- 18 Rhody Ride at Miller

June

- 1 Family/Youth Trail Clinic at Sage Camp
- 11 **Zoom** Board Mtg 7pm
- 19 **In Person** General Mtg. 7pm
Program: Horse Camps, Part 2
- 22 Dan Kelly Ride
- 22-23 Packing Clinic

July

- 9 **Zoom** Board Mtg 7pm
- 20 Summer Picnic 11 - 3
Pioneer Memorial Park
- 27 & 28 Chapter Campout at Sage Camp

August

- 3 & 4 Joyce Daze Parade & Campout
at Margaret Salstrom's Epona Ranch
- 13 **Zoom** Board Mtg 7pm
- 21 **In Person** Chapter Mtg 7pm
Program: "Ride Rally"
- 22-26 Humptulips Ride & Campout

September

- 7 Olympic Spirit Prize Ride
at Sage Horse Camp
- 7 Goat Run
- 10 **Zoom** Board Mtg 7pm
- 18 **In Person** General Mtg 7pm
Judy Sarles "Equine Emergency Preparedness"
- 27 Dungeness River Festival

October

- 8 **Zoom** Board Mtg 7pm
- 12 Salt Creek Spaghetti Ride
- 16 **In Person** General Mtg. 7
Heather McDonald, Psy. D.
"Fear Goblins & Anxiety Ghosts on Your Horse"

November

- 12 **Zoom** Board Mtg. 7pm
- 16 Fall Colors Ride
- 20 **Zoom** General Mtg 7pm
Speaker: Janet Jones, topic TBD

December

- 7 Holiday Party 1 - 4 pm
- 10 **Zoom** Board Mtg 7pm

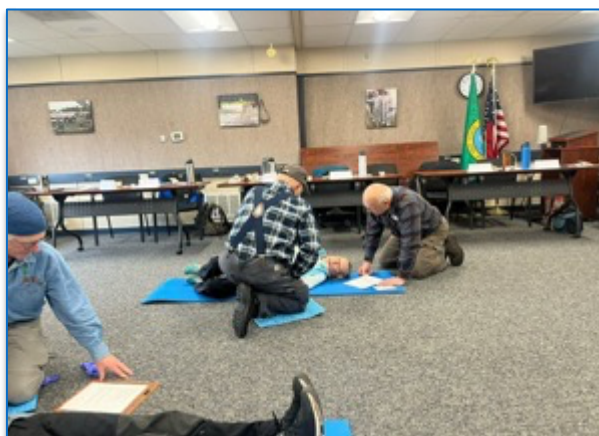
Board Meetings are held the 2nd Tuesday of each month over Zoom. Members welcome!

In Person Meetings will be held at Gardiner Community Center unless otherwise noted.
980 Old Gardiner Road
Sequim, WA 98382

Wilderness First Aid/CPR Training

by Donna Hollatz

Members who are certified sawyers must maintain current First Aid/CPR certification to do chainsaw work. They must be recertified every two years. It is important for anyone doing trail work with sawyers to have this training, also, as they could end up rendering first aid if an accident occurred. Our Trail Coordinator, Rebecca Wanagel, arranged for **Wilderness First Aid/CPR** to be taught to members who frequently work where medic response might be delayed (back country or significant distance from a road or trailhead). Thirteen members were able to take this 16-hour class, presented by Wilderness EdVentures, over the weekend of May 4-5. There were many opportunities to practice scenarios, which will help students remember the steps needed to perform lifesaving steps in case of injury. The instructor demonstrated equipment and supplies that should be carried in First Aid Kits, and techniques for using them. Injury evaluation, applying pressure bandages and splints, using epee pens, taping ankles, and practicing CPR were all included. The Carlsborg Fire Station generously donated class space for our use. All participants agreed that it was a very worthwhile course. It is information we never hope to have to use, but will feel better prepared if an injury or health incident occurs.



Pictures
By
Judy
Sarles



Honorable Mention “State Park Volunteer Group of the Year”

On April 4th, Ranger Stacey Coltrain, from Sequim Bay State Park, notified us that our Chapter had been awarded “Honorable Mention” in the State Park “Volunteer Group of the Year” contest. Rangers at Sequim Bay State Park nominated us for all the work we do at Miller Peninsula. I don’t know how many groups were nominated or if there were more than one who got Honorable Mention, but it is still a nice “feather in our cap” to get recognition at the State level.

Your 2024 Peninsula Chapter Officers & Chairs

Take the time to note that this list of Chapter members continues to step up and be your Board Directors and Chairs. They do an outstanding job. We are a very successful BCHW Chapter because of the work they do for you. You can support them in many ways: attend your General Meetings, do volunteer event and trail work, attend our ride events, join every year, bring in new members, and send them a thank you now and then. As with all organizations, burn out is a given. Consider shadowing the person who holds one of these positions so that you can step up to take their place in the near future. Your Chapter's future depends on you!

| | |
|-----------------------------------------------|------------------------------------------------------------------------------------|
| President – Theresa Percy | teopercy@gmail.com |
| Vice President – Pat Cosner | haffyluv106@gmail.com |
| Secretary – Joan Wildman | joanwildman5745@gmail.com |
| Treasurer – Donna Hollatz | jdholatz@gmail.com |
| State Director – Jeff Chapman | bbbranch@olympus.net |
| Alternate State Director – Judy Sarles | jw94507@yahoo.com |
| Trail Project Coord. – Rebecca Wanagel | rwanagel@gmail.com |
| Membership Chair – Joan Wildman | joanwildman5745@gmail.com |
| Trail Ride Organizer – Linda Morin | ehoyrt3@gmail.com |
| Volunteer Hours Chair – Nicole Witham | witham.nicole@gmail.com |
| Publicity Chair – Donna Hollatz | jdholatz@gmail.com |
| Web Manager – Ben Wildman | bwildman57@gmail.com |
| Social Media Manager – Mandy Biles | EquestriansAcademy@gmail.com |
| LNT Education – Juelie Dalzell | gobi@olympus.net |
| Ways & Means – Kim Merrick | eloise55@gmail.com |
| Legislative – Jeff Chapman | bbbranch@olympus.net |
| Grant Liaison – Denise Hupfer | dhupfer1@outlook.com |
| Email for the Chapter: | peninsulabchwchapter@gmail.com |

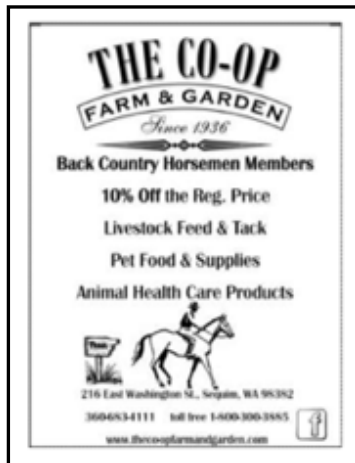
Membership 2024

Membership is for one year, beginning on January 1st. We welcome new members at any time and always enjoy meeting new people. We have a lot of fun while working to keep trails open to everyone. You don't need a horse to belong and contribute or work with us. If you have friends who are interested in joining, please have them follow these directions:

Go to www.pbchw.org. Click or tap the JOIN tab. Click or tap on the Back Country Horsemen logo. Complete the form. Online payment is at the bottom of the form. It is very simple.

If a paper form is desired, go to our website, www.pbchw.org, click or tap on the JOIN tab, scroll down to the bottom of the page and click or tap on the image of the paper form. It will populate and can be printed from there. Follow the instructions on the form for mailing and payment.

Thank You to the businesses who support our efforts!



These businesses support BCHW. Please take your business to them.

