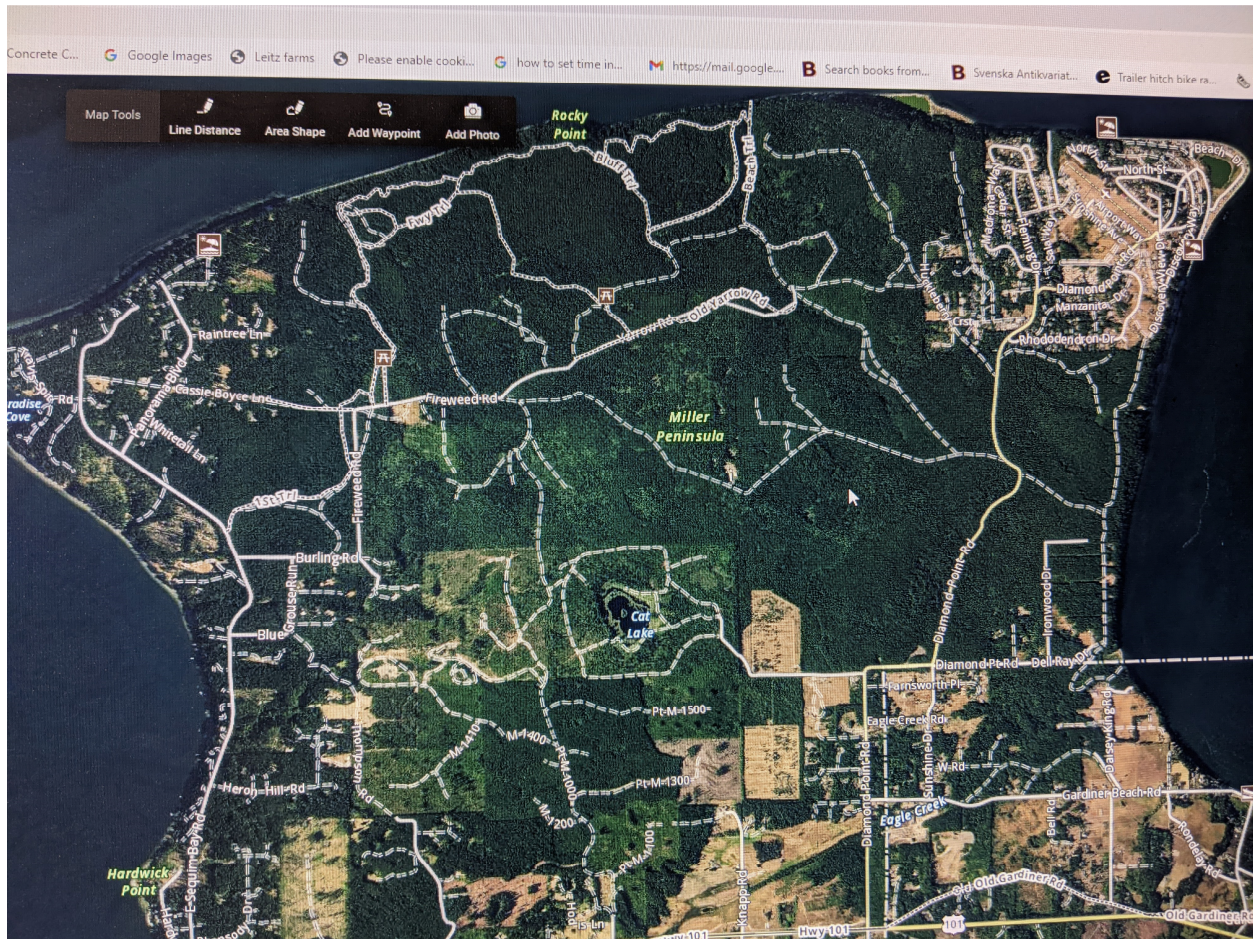


Miller Peninsula

This is perhaps the most popular set of trails local to Sequim. There are upwards of 25 miles of mostly flat trails, access to beaches, and great parking for horse trailers.



Discover pass required, Restrooms available. Purchase on line at the site below.

<https://store.discoverpass.wa.gov/>

Getting There

Leaving Sequim, go about 6 miles East on Hwy 101 to Diamond Point Road. Turn left on Diamond Point Road and follow for 1.3 miles to the Miller Peninsula State Parking Lot Entrance.



There are a variety of trails on the Peninsula, with more trails evolving, as the adjoining DNR lands also have trails.

