

Fall 2019

# Trail Crafters News

Olympic Peninsula, Washington



Oct. 10, 2019  
Packing out of Heather  
Creek Upper Dungeness

Back Country Horsemen of  
Washington (BCHW), is  
a 501

(c)(3) organization with  
31 chapters across the  
state dedicated to: keeping  
trails open for all users;  
educating horse users in  
Leave-No-Trace practices;  
and providing volunteer  
service to resource  
agencies.

## Special Interest Articles

- New Tubal Cain  
Footlog Pg 2
- New Slab Camp  
Stock Bridge Pg 5
- Layton Hill Pg 7
- Dungeness River  
Festival Pg 9

## Highlights:

Trail Report	12
Contact Info	12
Legis. News	17
Calendar	20
Membership	21

## PENINSULA CHAPTER BACK COUNTRY HORSEMEN OF WASHINGTON

PO Box 1931 Port Angeles, WA 98362 visit us on FB [peninsulabchwchapter@gmail.com](mailto:peninsulabchwchapter@gmail.com)

## Stepping into Fall

We have had snow in the mountains for the past couple of weeks and some frosty mornings. BCHW-PNC members have been very busy rounding out summer and heading into fall. I hope you will enjoy reading about our accomplishments and think about taking a stab at joining into some of the work parties if you haven't been involved recently. Things may slow down some for winter, but keep an ear open so you don't miss something fun.

## President's Message – Dan Dosey

### Autumn Greetings

As the weather cools and we see the leaves changing color, it is a good time to reflect on the accomplishments of the summer. Our trail crews had a very busy season. A new footlog was installed on the Tubal Cain Mine Trail and a stock bridge was replaced on the Slab Camp Trail. Without the expertise of Del Sage and Tom Mix, our sawyers and rigging engineers, these jobs would not have been possible. The Forest Service has no budget to maintain these trails. We are so fortunate to also have volunteers from WTA, the Gray Wolves, and Olympia Mountaineers to assist us in these endeavors.

This was a big summer for our members with pack stock taking tools and supplies in for work crews to the Duckabush, Camp Handy, Lower and Upper Big Quilcene, and Heather Creek (Upper Dungeness). They enjoyed a lot of gorgeous scenery in the process!

Our crews also removed hazard trees for the USFS at trailheads and have plans to remove identified trees at Camp Handy.

We will all hunker down now, and get some winter relaxation time, but be thinking about how you would like to be involved next year.

Enjoy the holidays with your families.

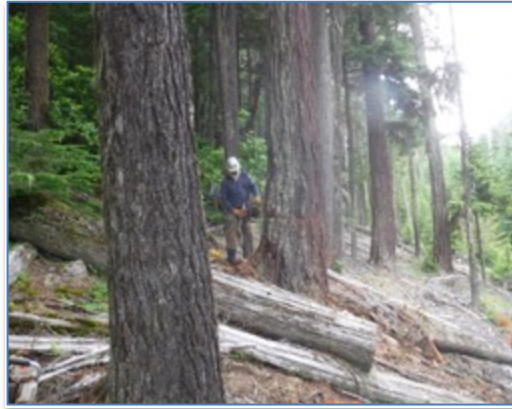
Dan

## New Tubal Cain Footlog – July & August, 2019

The footlog near the trailhead for the Tubal Cain Mine Trail needed replacing this summer. The Forest Service chose the tree that they wanted, but it was growing about a mile up the road! Del Sage, Tom Mix, and Jim Hollatz went in July 9<sup>th</sup> to fell the tree. After limbing, Del hooked it to his truck and dragged it down the road to the trailhead, then using blocks and pulleys, moved it down the trail. All of that required a great deal of Del's "rigging knowledge". Once near the creek, a WTA crew finished prepping the log. It was moved into its final place with a chain saw winch, then a railing was added, with the project being finished on August 5<sup>th</sup>.



Clearing path for tree to fall.



Making final cut to fall tree.



Log hitched to truck for pulling.



Moving log with rigging.



Building approach to footlog.



Completed footlog.



## Girl Scout Project – August 3<sup>rd</sup>



Our chapter has frequently joined with Boy Scouts working to earn their Eagle Scout badge by helping on one of our trail projects. This summer we had the opportunity to team with a Girl Scout working to earn her Gold Award. Arianna's project installed interpretive signage along the trail of North Olympic Land Trust's nature preserve at the Lyre River advocating the mental health benefits of spending time enjoying our natural world. Peninsula Chapter set up a kiosk to display our projects and teach the Leave No Trace and 3S Trail Safety program to participants, along with assistance from Buckhorn Chapter. Take a trip out to walk this trail when you have the opportunity. It is beautiful!



## New Mounting Log Installed at Miller Peninsula – Sept. 18th

Miller Peninsula's parking lot has a wonderful ADA mounting ramp, but some of us prefer to lead our horses beyond the pavement and stimulations of activity before climbing aboard. Erik Plunkett, park ranger, allowed us to place a large cedar log along the trail edge about 100 feet up the trail. Give it a try if you need a "leg up" next time you are there.



## July 13 – Membership Picnic

Our annual picnic was held at the home of Dan and Debbie Dosey. The weather teased us, but ultimately it was a pleasant day and a very enjoyable gathering for many members, with delicious food, lively conversations, and games of croquet.



General meeting and comradery.

## August 10<sup>th</sup> – Margaret Salstrom Ride

Unfortunately, rain poured down on our annual Joyce ride from Margaret Salstrom's, but those who stayed home missed a wonderful meal, a cozy fire in the wood stove, and great company. After struggling with some health problems a year ago, Margaret is back to her plucky self and we appreciate her generosity in opening her property and sharing it with us.



## August 16 - 20 – Slab Camp Bridge Olympic National Forest

BCHW Peninsula Chapter completed the re-build of a 35-foot stock bridge along the Slab Camp trail in Olympic National Forest in August. This project was the culmination of about two years of planning and work.

There is no accessible recorded history of the bridge that was replaced. Most of the trails and roads in that area existed in the 1930s, which suggests that the bridge had been built by 1932. If it was that age, perhaps it had been replaced before or it may have been moved as trails were rerouted. Timber bridges can usually be expected to last 30 – 40 years. Those who dismantled this one reported that it was of very old construction. The cedar decking was held down with square nails/spikes and the stringers were attached to their sills with round rods.

The bridge was identified as failing two years ago as part of a two-year RAC grant proposal assembled by Rod Farlee. The planks for the bridge decking were cut from Douglas fir trees that fell at Dungeness Forks Campground in a windstorm in 2018. The contractor bucked them to the length we needed and hauled them to the Quilcene Forest Service Yard. There, the Gray Wolves trail maintenance crew used our Alaskan mill over the summer of 2018 to saw the planks. Del Sage, Peninsula Chapter vice president, hauled them to his place for storage and then to the trailhead as needed. Multiple pack trips were made by chapter members using horses and mules to pack the planks to the job site, where they were staged, beginning in November 2018 and continuing through spring and summer of 2019 (5 pack days). Each mule or horse could pack 2 planks along the 2 ½ mile switch-back trail down to the job site (elevation loss of about 1,000 feet). Two trips were made (June and July 2019) to fell the huge cedars that become the stringers for the bridge. A total of 35 planks were hauled. Some members rode in, while others lead their pack animals on foot.

The final construction of the bridge took place August 16 – 20<sup>th</sup>. A crew of about 25 adults and 15 Boy Scouts rode and hiked to the job site, packing all of the tools needed to do the job with the help of mules and horses. Two trips, using 4 pack mules each, were needed to get all the equipment in place. They carried in 1,000 pounds of rigging gear. (And had to carry it back out again at the end of the project.) Workers and stock camped at the trailhead during the 4 days of construction and traveled to and from the site each morning and evening. A few camped near the bridge site for the 4 days.

The old bridge was removed, saving the side rails, which were still good. Peninsula Chapter crew leaders, Del Sage and Tom Mix (along with 6 or 8 BCHW volunteers) used an elaborate rigging system and a chain saw winch to move the three huge cedars (35ft x 23in, midspan) into place on the existing bridge sills. (Forest Service requirement is 18 inches midspan, so these exceed the standard.) Once those were in place and leveled, the planks were drilled and nailed down and the side rails re-mounted. The Olympia Mountaineers (who have learned chain saw techniques from our BCHW trainers) sent a crew of about 10 to assist and learn how rigging is used to move things to help build trails. A Boy Scout earned his Eagle rank by doing his project notebook on the bridge and securing donations of decking spikes and food for the crews. He was joined by 9 Scouts and 2 leaders who helped on the project. Rebecca Wanagel led a WTA crew of 6 or 8 that helped with the building, too. This new stock bridge should last for many years!



## Photos from Slab Camp Bridge Project



Gray Wolves milling planks, July 2018



Preparing mules to pack planks, Nov. 2018



Moving stringer into place with chain saw winch, Aug. 2019



Tom and Dakota crossing new bridge!



Del Sage and Tom Mix focused on the operation of the power winch used to move the stringers into place, Aug. 18, 2019

## September 7 & 8 – Layton Hill

Del and Judy Sage generously opened their beautiful Layton Hill Horse Camp to our chapter members for a campout, trail ride, and packing clinic. A number of members took advantage of the camping on Friday night and rode the trails on Saturday. There was a general meeting and potluck on Saturday evening that was well attended. Sunday, Del Sage and Tom Mix demonstrated properly loading mules to pack gear and supplies into the backcountry. They showed us a camp kitchen that is built to attach to a pack saddle, how to wrap a manty and attach it to the pack saddle, and how to use paniers. Proper weight distribution on the mules is the key to success! There was also instruction in using hobbles and teaching your horse to hobble by one foot. There were a number of young people at the packing clinic, so our hope is that we can get some new blood interested in this time-honored skill.



General meeting at Layton Hill.



Mule with paniers.



Left: Mule with manty being tied.



Above: Horse with single foot hobble.

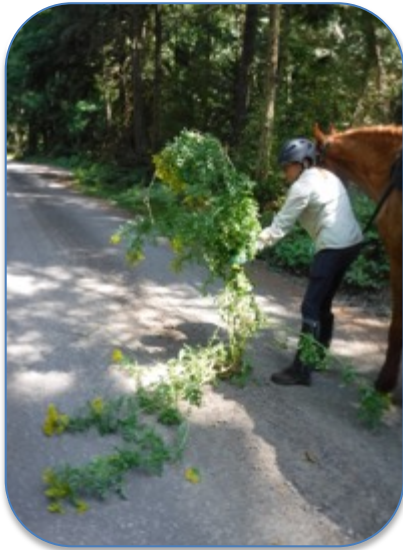


## **August 14 – Quilcene Ranger Corps**

We helped the QRC kids celebrate the end of their trail work season with a pizza party at the Quilcene Ranger Station. Tom Mix brought Dakota and two mules, so kids who had never ridden a horse got to try Dakota! Donna Hollatz and Juelie Dalzel presented our 3S Trail Safety program and Leave No Trace education. Helping young people get involved with forest stewardship and trail work is important to keeping the public involved with our mission.



## **Pulling Tansy at Miller Peninsula – August 15**



Our trail crews were so busy with big back country projects this spring and summer that we ended up pulling mature plants at Miller this year before they could spread seed.

## **Photography Assistance Requested**

One of the best ways to document all of our wonderful activities is through photos! We do not have an official photographer and it is difficult for one person to be at all of our events, so it would be extremely helpful if those of you in attendance would take some photos and send them to Newsletter editor, Donna Hollatz ([jdohollatz@gmail.com](mailto:jdohollatz@gmail.com)). This documentation can then be used for posters, newsletters, state calendar, and other promotions.

A HUGE THANK YOU TO THOSE OF YOU WHO HAVE SENT PHOTOS IN THE PAST!



## **September 27 – Dungeness River Festival**

Peninsula Chapter was once again a major participant at the Dungeness River Festival. It is held annually at Railroad Bridge Park, with the purpose of teaching environmental awareness to Sequim students in grades 3 – 5. This year we had a kiosk set up and members teaching Leave No Trace and 3S Trail Safety to 950 students and 450 adults. The tool trailer was on display to show the implements we use to build trails. Del Sage brought his pack mules and Kat Sample and Judy Dupree rode their trail horses to demonstrate safe interactions between all trail users. Our donkey mascot, Murphy, was proudly presented by Tony Sample. Students received an emergency whistle/compass/light keyring as a participation souvenir. I'm sure it was a memorable field trip for the kids.



Tools of the trade on display.



3S Trail Safety being taught.



Pack mules ready to perform.



The animals are a big hit with the kids.

## October 5th – Salt Creek Spaghetti Ride

The Forest Service lands adjoining the county park at Salt Creek were subjected to considerable logging during the past year. This had some negative impact on the trails we normally ride, but things are being rebuilt and some wonderful new views are one of the good outcomes.

The annual Spaghetti Ride has been plagued with wet weather several times recently, so seeing rain falling the morning of October 5<sup>th</sup> was very disheartening! Fortunately, a number of enthusiastic riders arrived and the rain stopped! The riders came back from the rides (one short, 90 min.; one long, 2 hr.) raving about the wonderful time they had and the exquisite views that the trails offer. Everyone enjoyed a delicious spaghetti dinner with lots of homemade desserts and a cozy fire warming the picnic shelter. This ride was jointly sponsored by Peninsula and Mt. Olympus Chapters, so there were some new faces and it was a good opportunity to visit with friends that we had not seen for a while. I am truly sorry if you missed this function.





## September 19, 2019 – Trail Work Crew at Salt Creek



Those who volunteer to clear trails are often treated to a beautiful view as well as an enjoyable trail ride. This was the case at Salt Creek where we rode to remove trees that were blocking the trail prior to the Spaghetti Ride.

## GO PNC! Be Proud of Your Volunteer Trail Work!!!

IT IS VERY IMPORTANT THAT YOU TURN IN YOUR VHs BY THE 5<sup>TH</sup> OF EACH MONTH. Don't hesitate to send Suzanne an email, [rkingandsking@gmail.com](mailto:rkingandsking@gmail.com), as soon as you do volunteer work of any kind related to trails, events, education, or anything tied to our Mission Statement.

Here are our latest numbers and comparison from last few years

### 2016

Total VH 7899.5  
Total Value \$261,197.36

### 2017-year end

Total VH 5165  
Total Value \$165,492

### 2018 year end

Total VH 6,150.5  
Total Value \$205,265.50

### Oct. 1, 2018 thru September 30, 2019

Total Basic Hours	2852.5	\$72,539.08
Total Skilled Hours	975.5	\$53,652.50
LNT & Educ.	292	\$7,425.56
Admin. & Plc Mtgs.	1241	\$31,558.63
Travel Time	1019	\$25,913.17
Total Hours	6,380	\$191,088.94
Vehicle Mileage	28,979.8	\$27,530.81
Total Miles	28,980	\$27,530.81
Total Stock Days	223	\$22,300.00

Grand Total \$240,919.75

**VOLUNTEERING IT'S WHO WE ARE MAKE YOUR HOURS COUNT – REPORT THEM**

## Your 2019 Peninsula Chapter Officers & Chairs

Take the time to note that this list of Chapter members continues to step up and be your Board Directors and Chairs. They do an outstanding job. We are a very successful BCHW Chapter because of the work they do for you. You can support them in many ways: attend your General Meetings, do volunteer event and trail work, attend our ride events, join every year, bring in new members, and send them a thank you now and then. As with all organizations, burn out is a given. Consider shadowing the person who holds one of these positions so that you can step up to take their place in the near future. Your Chapter's future depends on you!

<b>President</b> - Dan Dosey,	<a href="mailto:dande111@centurylink.net">dande111@centurylink.net</a>
<b>Vice President</b> - Delman Sage,	<a href="mailto:no1sage@gmail.com">no1sage@gmail.com</a>
<b>Secretary</b> - Don Gonder,	<a href="mailto:DEGBCHWPC2016@outlook.com">DEGBCHWPC2016@outlook.com</a>
<b>Treasurer</b> - Cindy Yager,	<a href="mailto:cy98362@yahoo.com">cy98362@yahoo.com</a>
<b>StateDirector</b>	-
<b>Alt. State Director</b> - Don Gonder,	<a href="mailto:DEGBCHWPC2016@outlook.com">DEGBCHWPC2016@outlook.com</a>
<b>Trail Project Coord.</b> - Tom Mix,	<a href="mailto:backcountrypacker.mix@gmail.com">backcountrypacker.mix@gmail.com</a>
<b>Membership Chair</b> - Kandy Mulrony,	<a href="mailto:kandylynnm@hotmail.com">kandylynnm@hotmail.com</a>
<b>Publicity Chair</b> - Debbie Dosey,	<a href="mailto:dande111@centurylink.net">dande111@centurylink.net</a>
<b>Events &amp; Education Chair</b> - Linda Morin,	<a href="mailto:ehoytr3@yahoo.com">ehoytr3@yahoo.com</a>
<b>Volunteer Hours Chair</b> - Judy Sage,	<a href="mailto:no1sage@gmail.com">no1sage@gmail.com</a>
<b>Legislative Chair</b> - Juelie Dalzell,	<a href="mailto:gobi@olympus.net">gobi@olympus.net</a>
<b>Email for the Chapter:</b>	<a href="mailto:PeninsulaBCHWChapter@Gmail.Com">PeninsulaBCHWChapter@Gmail.Com</a>

## Trail Projects Coordinator Report by Tom Mix – Through October 18, 2019

### Arranged by Land Manager

#### Work Parties Held:

##### USFS – ONF

- Lower Gray Wolf – Gray Wolves did tree logout all the way to the end of trail and re-benched about half a mile before Cliff side camp. The crew repaired a section of trail that a large root ball ripped out at Cliff Side camp.
- Lower Big Quilcene – The Gray Wolf Crew is leading the reroute work. We provided pack stock support to a recent WCC crew. Our last WCC hitch for the season is Oct 24-31.
- Noxious weeds – Upper Dungeness – We assessed the thistle treatment we accomplished earlier in the season. Our efforts are paying off. The treated areas only had juvenile plants that were hidden when we were first in there. We identified 2 new infestations. USFS and County noxious weed focals have been advised. The newly identified areas will receive initial treatment next season. The trail has been logged out from the Trailhead to Boulder Shelter.

##### NPS – Olympic

- West Elwha – trail log out.

##### NOLT

- Siebert Creek – trail corridor trimming.

##### WSP – Miller Peninsula

- Miller Peninsula State Park – no report
- Miller Peninsula Jamestown S'Klallam Tribal lands (JST) – no report.



## **Trail Projects Coordinator Report by Tom Mix (cont. from P. 12)**

### **County - ODT**

- ODT @ Dean Creek Bridge in Blyn – We were asked by Clallam County to raise and level the bridge. It is a 62 foot long concrete deck bridge. The creek changed course 3 years ago and undermined the northeast corner of the East sill and the bridge dropped about 5 feet. We raised the bridge to level, secured the sill on a crib. Built crib walls to hold the approach material and finished the project by building a protective boulder wall to encourage the creek to stay away from the east abutment.
- ODT @ Onella Road – tread work on the stock trail.

### **DNR**

- Miller Peninsula – DNR has walked their part of the trail from Cat Lake Road to Pierce Road. DNR has approved the trail route. Trail construction can begin.
- Striped Peak – We collaborated with WTA to continue to construct new trail which will connect with Clallam County – Salt Creek Park.
- Foothills – Log out.

### **Upcoming Trail Parties:**

#### **USFS – ONF**

- Bridges – We have been asked to lead a bridge construction effort at Glacier Creek near Ross Dam rec area next season. That will be a 3 stringer, 65 foot span stock bridge. We are awaiting USFS decision to proceed.
- Noxious Weeds – We will schedule treatment parties and assessment trips when and where needed during the season. None scheduled at this time. Initial sites – Heather Creek Meadows above Camp Handy. Please notify the Trail Work Projects Coordinator should you observe noxious weeds on our trails.
- Upper Big Quil – Remove rather large root wad; rework stock hazard rock about 4 miles in (blasting/gabion basket)
- Lower Big Quil – Continue to construct the reroute trail past a slide area. Mike Bonomo is leading this effort.
- Lower Dungeness – Avoid having stock on this trail until further notice. There is a new slide area a short ways past the puncheon saw site that has to be repaired. Mike Bonomo and his crew have completed puncheon rebuilds.
- Upper Gray Wolf – bridge out just before the ONP line. Also, 5 miles in from TH there is a failed switchback that will need a crib wall built and retreading of the switchback into a climbing turn.
- Quilcene – We have been asked to conduct instruction and certification for chain and crosscut sawyers and to conduct instruction in rigging for selected USFS and volunteers. We have been asked to help remove hazard trees at trailheads and near back country camp areas.

#### **NPS – Olympic**

- Wolf Creek – We will head in from the top and accomplish log out. The ONP failed to prep for the dam removals and now the main road is gone. The Elwha has once again exerted influence on the ONP road and has isolated the ranger station, maintenance yard and Mule Barn. Our current plan is to approach Wolf Creek from the top down. Future access to the Elwha may not occur for another 5 years, if ever.
- Kalaloch tsunami evacuation route trail corridor – Heather may ask us to lead a corridor clearing work party event to open up a tsunami escape route. We await Heather's schedule.
- Heart of the Forest, Lake Angeles, and Heather Park trails all have downed trees and need our attention. John Wegmann is coordinating trail work parties for this area.

## Trail Projects Coordinator Report by Tom Mix (cont. from P. 13)

### WSP – Miller Peninsula

- Trail building – We will start our season of trail building soon.
- Noxious weeds – We will schedule treatment parties and assessment trips when and where needed during the season. None scheduled at this time. Initial sites are Miller Peninsula for Tansy and Canary reed. Please notify the Trail Work Projects Coordinator should you observe noxious weeds on our trails.
- Picnic tables – we will install 3 or 4.
- Corridor – Mow the Discovery Bay Loop to 5 year standards.

### DNR

- Striped Peak – new trail construction – we will c/w Rebecca on upcoming work parties.
- Little River – We are planning to remove the waterline spiral wrap wire and then ask the WCC crew to back fill the pipe route for stock safety. Sally Coats wanted this done about a century ago.
- Miller Peninsula – We will start trail construction from Cat Lake Road to Pierce Road which will form a connector from the ODT to the WSP system. Once the connector is in and operational, we will start flagging new trail routes for hikers/bikers and equestrians.

### WTA

- We expect to be asked to provide pack stock support to WTA crews for North Fork Skokomish to O'Neil, Appleton Pass, Arora Ridge, and possibly Happy Lake Ridge. They will ask Mt. Olympus chapter for pack support to the Mt. Muller top part of the loop trail. They will ask Grays Harbor for packing assist to Skyline (Low Divide) and O'Neil Pass (Enchanted Valley).

### SAWYER CERTS:

- Contact Tom or Del should you need to get certified or recertified for chain or cross-cut saw work.
- USFS Saw Program – Del Sage is now recognized as one of the USFS's Region 6 Feller Instructors!

### Issues:

#### USFS – ONF

- With ONF being, one of the very limited number of Forests, without a NEPA Programmatic thus having to self-inflict a full NEPA for any replacements in-kind for foot logs and bridges actually encourages them not to support our volunteer efforts to help. Same goes for trail reroutes around or across localized washouts. Most normal Forests have a Programmatic which supports in-kind replacements of failed or failing foot logs and stock bridges and supports localized reroutes up to 1500 feet across or around washouts. After offering neighboring programmatic narratives and even one adjacent land manager offered to assign staff to help with the narratives – the Quilcene Ranger district declined any and all assistance. Outcome: We were prepared to replace 3 bridges over the course of these past 2 seasons. However – we were only granted permission for 2 and the 3<sup>rd</sup> site has yet to be selected and internal paperwork accomplished by the USFS Quilcene Ranger District.
- Quilcene Ranger Corps – This is an organization that provides opportunities to Quilcene area youth to be active in the outdoors during the summer season. They learn trail maintenance skills and how to be safe while working. The USFS has managed this program in the past and recently farmed the admin part out to PNTA. PNTA abruptly dropped the program last season without any transition plan. We quickly provided some interim funding and managed to keep the program viable for a season. In the meantime, the USFS – Quilcene Ranger District was to build a program plan. Now we find out that in fact nothing was done internally by the USFS to plan for this program's future. Their position is that they do not have any funding available. Outcome: Quilcene youth have lost a program and opportunities.



## Trail Projects Coordinator Report by Tom Mix (cont. from P. 14)

- It is clear to the writer that the USFS is very assertive in taking no action, which is in fact a decision. This is passive aggressive behavior at its best.
- Staffing – the USFS ONF is under a hiring freeze and can only fill vacancies from within. Outcome: Filing one vacancy from within only creates an opening where the transferee came from. Life in a Cuisinart machine.

NPS-Olympic – none

NOLT – none

WSP – Miller Peninsula – none

County – ODT – none

DNR – none

WTA – We continue to get more and more pack support requests. BCHW and WTA need to meet and craft a packer support reimbursement process and fund it.

PNTA – need to restart discussions on just exactly where is the PNTA route across the Peninsula

PCTA – no issues

### Grant Status:

Identified as RCO (RTP) or RAC

- RCO Grant 16-2714 – The effective date of our current active RCO grant 16-2714 is April 4, 2018. This grant ends October 31, 2019. We have submitted reimbursement requests for effort completed. BCHW has levied more administrative requirements on grant reimbursements, volunteer payment and volunteer donations of their efforts and time. The documentation demands significantly increase our Treasurer and volunteer coordinator time as well as more admin effort by our volunteer crew members. This levy may tip the cart on our participation. We have issued our project progress report to the Grants committee for inclusion in their overall report to RCO.
- RCO Grant 18-2255 – For the 2019 – 2020 seasons. We received word from our BCHW Grants committee that RCO has funded us November 1, 2019 thru October 31, 2021. Question – with the huge increase in documentation demands from BCHW Grants committee – how should we participate during the 2019–2020–2021 cycle? One issue may be that volunteers will not receive stock day reimbursements as that precipitates a W9 and maybe a 1099. An alternative may be to seek per diem reimbursements. We have been encouraging BCHW to administer all grant funds at the BCHW level and not involve local chapter treasurers. BCHW has access to 20% of grant allocations for admin services. That 20% is more than enough to fund a bookkeeping service.
- RAC – Our grant for Title II funding for foot log replacements and for back country privy installations – Slab Camp bridge was accomplished. Following the Slab Camp Bridge – the next bridge project is being reevaluated by the USFS and may or may not actually happen. At the writing of the grant we identified 8 candidate bridges needing replacing. To date, we accomplished 2, the third will happen as weather permits and the third job site is uncertain. The third bridge may be on the Skok or Lena Lake trail. The privy part of that work package is not getting much in the way of USFS attention. I have compiled a less than favorable report to the RAC about lack of support and follow-through from the USFS that directly impacts our ability to complete projects as funded by RAC. Late breaking news: USFS-WO has declared any pit privy receiving 20 or more visits a day is now considered an environmental cesspool and is to be totally deactivated. That no new pit toilets be installed in the back country. To us that means we will not be able to accomplish the second part of our RAC work statement. We will need to repurpose our cache of milled privy wood.

## Trail Projects Coordinator Report by Tom Mix (cont. from P. 15)

RAC – We were awarded follow on grants:

- LBQ Reroute ask: 12k. I reduced it to 9k. Rationale – I removed materials and supplies @ 3k. We got funded at 9k through Oct 2020.
- Collapsed Gold Creek Crossing ask: 10k. I reduced it to 2.2 or 2.4k Rationale – I knew PNTA plans to work that reach and accomplish that work. I removed 7.8k knowing we had additional funds from the current RTP and we will be engaging a WCC crew. We got funded at 2.2 (I think) thru Oct 2019. The reason I say “I think” is that the note taker for USFS typed 2.2 as I said 2.4. No biggie.

Clallam County Trails Advisory Committee per Kat

- The County is being heavily pressured to permit e-bikes on both the ODT and OAT. The ODT is a paved surface multi-user trail. The OAT is a back country style trail with natural material surface.

## BCHW: Who's-Who at the State Level

President	Young	Kathy	president@bchw.org
Vice President	Sunde	Dave	vice_pres@bchw.org
Secretary	Wilson	Janelle	secretary@bchw.org
Treasurer	Starke	Teri	treasurer@bchw.org
Safety Officer	Wesselius	Doc	wesselius@wildblue.net
Special Assistant for Advocacy	Chapman	Jeff	bbbranch@olympus.net
Legislative Chair	Chapman	Jeff	bbbranch@olympus.net
Public Lands Chair	Erben	Pete	Public_lands@bchw.org
Membership Chair	Sedgwick	Nicole	membership@bchw.org
Awards Chair	Wilhelm-Howell	Lynn	redboots4u2@gmail.com
Education Chair	Merrick	Kim	eloise55@gmail.com
LNT Chair	Byram	Jane	Int@bchw.org
Saw Program Coordinator	Mix	Tom	backcountrypacker.mix@gmail.co
Saw Program Coordinator	Karniss	Tony	tkarniss@gmail.com
Volunteer Hours Chair	Wesselius	Deb	wesselius@wildblue.net
Membership Development Chair	Carmichael	Ken	kcarmichael2225@gmail.com
Governance and By-Laws Chair	Carmichael	Ken	gov_and_bylaws@bchw.org
Special Projects Coordinator	Ridlon	Jason	jhridlon@fairpoint.net
Ways and Means Chair	Starke	Teri	ways_means@bchw.org
Rendezvous Chair	Sedgwick	Nicole	bchwexec@bchw.org
Publicity Chair and THN Editor	Yarboro	Dick	easyrider@scattercreek.com
Webmaster	Thode	Jim	webboss@bchw.org
Photographer	Thode	Jim	webboss@bchw.org
BCHA Director	Wallace	Darrell	bcha_dir1@bchw.org
BCHA Director	Ridlon	Jason	bcha_dir2@bchw.org
BCHA Alternate Director	Carmichael	Ken	kcarmichael2225@gmail.com
Historian Chair	Enrico	Chris	cenrico@comcast.net

## Legislative News – Jeff Chapman

### USFS Reply Regarding Tubal Cain/Silver Lake Plan:

Jeff reports that he received a letter from USDA regarding objections raised by BCHW and others regarding the Environmental Assessment done to decommission roads in ONF in the Tubal Cain/Silver Lake area to protect the Dungeness Watershed and Taylor's Checkerspot butterfly. Forest Supervisor Rita LaFord concluded that everything was done properly for the Environmental Assessment and that the Forest Service could proceed with their plans as outlined:

- Treat and put into storage (Maintenance Level 1, ML1) about 20.7 miles of open (ML2, high clearance) forest roads;
- Decommission about 10.4 miles of open (MK2, high clearance) forest roads, leaving a path for access on foot where feasible;
- Decommission 1.4 miles of ML3 (passenger vehicles) roads (NFS road 2879999);
- Convert 1.4 miles of existing ML3 road to trail (NSF road 2870230);
- Relocate and improve two trailheads and associated parking areas;
- Retain year-round access on the 2870270 road at its current ML2 status;
- Place boulders on the 2870270 road on the south side, near the end (milepost 1.6) to focus parking and better define the trailhead to protect Taylor's Checkerspot butterfly habitat;
- Place boulders or a berm adjacent to a roadside pullout area (milepost 11.3) along the 2870000 road to protect habitat while still providing space for parking off to the side of the road and walk-in access (about 20 ft) to a dispersed campsite.

### USFS Survey Okanogan/Wenatchee National Forest

If you ride or recreate in the Okanogan/Wenatchee area, you may be included in a USFS survey that will be ongoing for the next year. The questions will involve your use of the forest. The information will be used for future planning. Let Jeff Know if you, by chance, get interviewed.

### e-Bikes:

BCHW members are encouraged to pay attention to the ongoing discussions about e-bike use on non-motorized trails. Most mountain-bike organizations have not created a public position and some "trial" programs are in place. DNR just opened 10 miles of new single track trail near Darrington on a "pilot" basis. BCHW plans to be included in discussions with Washington Trails Assn. and Evergreen Mountain Bike Assn. on where e-bikes are appropriate, and will request that state agencies discuss them with us before opening other areas.

### Plight of Public Lands

Here are two articles, that you might find interesting, regarding the increasing importance of volunteers in the maintenance of USFS trails.

- Pacific Coast Trail: <http://www.marketplace.org/2019/10/17/u-s-parks-and-trails-rely-on-a-volunteer-labor-force/>
- USFS Trails in Idaho: <https://www.ourmidland.com/news/article/Some-Idaho-trails-fade-others-disappear-as-funds-14546590.php>




## Classified Ads

**Horse Property for Sale**  
 4054 East Sequim Bay Road  
 All set up with Home, 3 Stall Barn, & RV Parking  
 Contact: Boyd Sharp (360)683-4137 or Cell: 206-550-5506

**Horse Boarding Facilities Available in 2019**  
 Board includes use of outdoor 50' Round Pen &  
 100' x 150' Riding Arena  
 Location: north off Woodcock between Towne Road & Sequim-Dungeness Way  
 Contact: Tom Mix (360)582-0460  
 Email: backcountrypacker.mix@gmail.com

All BCHW members can post a free equine or farm related ad. 20 words or less. Must include contact info. Due by the 25<sup>th</sup> of the month by email: [PeninsulaBCHWChapter@Gmail.Com](mailto:PeninsulaBCHWChapter@Gmail.Com)



**THE CO-OP**  
**FARM & GARDEN**  
*Since 1936*  
 Back Country Horsemen Members  
**10% Off the Reg. Price**  
 Livestock Feed & Tack  
 Pet Food & Supplies  
 Animal Health Care Products



216 East Washington St., Sequim, WA 98282  
 360-683-4111 toll free 1-800-360-3885  
[www.thecoopfarmandgarden.com](http://www.thecoopfarmandgarden.com)



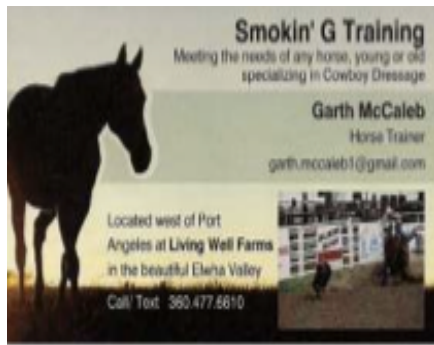
Back Country Horsemen Members 10% off  
 Just show your membership card

**LEITZ FARMS**  
 INCORPORATED  
 DELIVERING QUALITY  
 HAY, FEED & FARM SUPPLIES  
 Representing **LOCAL Feed**  
 Manufacturers Elenbaas & X-Cel  
 Quality Eastern Washington Hay - Quantity Discounts  
 Complete Lines of Fencing and Animal Management Systems Available  
 173 Mount Pleasant Rd., Port Angeles  
 360-461-1091 • 360-452-1400  
[leitzfarmsinc.com](http://leitzfarmsinc.com)



**Coastal**  
**"Just What the Country Needs!"**

Our local store is very generous with donations to BCHW-PNC!  
 Please show your appreciation by supporting this business.



Garth McCaleb is giving BCHW members 10% Discount. Just ask or bring this ad.  
He comes highly recommended by several BCHW members. Call and make your



Soon to be up and running, Blazing Sky Ranch.  
Give Lori Martin a call and find out about this new endeavor!



## Opportunity to Make Donations to the Chapter!

The following is from an article found in USA Today. I tried it and found it works as advertised. October 31, 2013; [USA TODAY](#). This holiday season, Amazon is in quite the charitable mood when it comes to giving away money to nonprofits. Amazon has released a new project, [Amazon Smile](#), which gives shoppers the opportunity to donate through the site to the charity of their choice. By shopping at [smile.amazon.com](http://smile.amazon.com) instead of plain old [amazon.com](http://amazon.com), 0.5 percent of the value of their purchases will be donated. What's even more amazing is that there seems to be no limit to the amount Amazon will give to charity, although as of now auto-renewed subscription purchases and digital products aren't included in the AmazonSmile project.

Ian McAllister, general manager of AmazonSmile, says the company did it simply "because it thought customers would love it." Donations will be made on behalf of a foundation established by Amazon, so those using AmazonSmile will not be able to claim donations as charitable deductions.

Philanthropic charities looking to register their organizations can visit [org.amazon.com](http://org.amazon.com), sign up, and begin spreading the AmazonSmile link to start the giving to your nonprofit. And, in a moment of shameless self-promotion, if you'd like to support the *Nonprofit Quarterly* (listed under the IRS and GuideStar as the Nonprofit Information Network Association) through AmazonSmile, [please click here](http://smile.amazon.com/ch/20-4080038) <http://smile.amazon.com/ch/20-4080038>

Aine Creedon

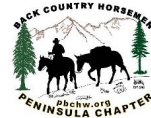
Every little bit helps so if you do buy from Amazon try this out.

Don Gonder, Secretary BCHWPC

Publish Date: 4/19/2019

DRAFT

## PENINSULA CHAPTER OF BCHW CALENDAR 2019



**TRAIL WORK PARTIES - 2nd Tuesday and 3rd Saturday of each month.** Watch emails for scheduling or call Tom Mix @ 360-582-0460

Jan			
14	Board Meeting	Cindy Yager's Residence	5:00 PM
26	Leadership Training	Ellensburg	8:45 AM
<b>Feb</b>	♥ ♥ ♥ ♥ ♥ ♥		
11	Board Meeting	Cindy Yager's Residence	5:00 PM
25	BCHW Legislative Day	Olympia	All Day
<b>Mar</b>			
11	Board Meeting	Cindy Yager's Residence	5:00 PM
15-17	BCHW RENDEZVOUS & Director's Meeting	Kittitas Valley Center 901 E. 7th Ellensburg, WA	9 AM daily
23	General Meeting Pot Luck	Sequim Prairie Grange 290 MacLeay Rd, Sequim, WA	5 PM - 8PM
23	BCHW 13th Ann. Gravel Pack-in	Capitol State Forest	8:00 AM
<b>Apr</b>			
6	Frosty Mossey Relay Foot Race	Dan Kelly Trail Head	11:00 AM
8	Board Meeting	Cindy Yager's Residence	5:00 PM
20	OAT Run	Dan Kelly Rd, off Hwy 112, Port Angeles Help only set up/take down wall tents	8:00 AM
23	Powell Johna-3S Youth Training	Miller Peninsula State Park	
27	Nati'l. Park Jr. Ranger Day	3002 Mt Angeles Rd Port Angeles, WA (up Race St)	8:30 AM
28	Buckhorn Miller Ride	Miller Peninsula State Park	
<b>MAY</b>			
11	Irrigation Festival Parade	Sequim	
4	WTA Youth Project #2 with 3S Training	Striped Peak & Salt Creek	
13	Board Meeting	Cindy Yager's Residence	
19	BCHW Joe Watt Canyon Ride	Ellensburg	



## Come Join Us!

Go to BCHW.org to join online its easier and faster! If online is not an option then print, fill out and sign the liability release (all members **18 and over**), and enclose your cash or check:

- **Chapter members:** You can renew online. If paying by check, make it out Peninsula Chapter, fill out an application and mail to:  
**BCHW – PC, Attn: PO Box 1931, Port Angeles, WA 98362**
- **Independent members** (folks who are **not** joining a chapter), make check out to “BCHW”, and mail application and payment to:  
**Dana Chambers ATTN: BCHW MEMBERSHIP,  
11404 210<sup>th</sup> Ave Ct E, Bonney Lake, WA 98391**



## Member Info

☐ New Member      ☐ Renewal – Membership number(s): \_\_\_\_\_

Adult's name(s): \_\_\_\_\_

Children's name(s): \_\_\_\_\_

Mailing Address: \_\_\_\_\_

City: \_\_\_\_\_ ST: \_\_\_\_\_ Zip: \_\_\_\_\_

Phone number: \_\_\_\_\_ E-mail: \_\_\_\_\_

Legislative district (if known): \_\_\_\_\_ County: \_\_\_\_\_

**Check if you DON'T want a MAILED newsletter:** ☐ BCHW (Trailhead News) ☐ Chapter Newsletter

## STATE MEMBERSHIP

### Basic Memberships

- ☐ Single \$41.00
- ☐ Family \$54.00

Levels below include Single or Family

- ☐ Contributing \$75.00
- ☐ Sustaining \$125.00
- ☐ Patron \$250.00
- ☐ Benefactor \$500.00

- ☐ Lifetime (Single) \$1200.00
- ☐ State dues paid online (attach receipt copy)

Additional State Donation \$ \_\_\_\_\_

State Subtotal \$ \_\_\_\_\_

## CHAPTER MEMBERSHIP

All chapter members must also be a member of BCHW. However, BCHW dues only need to be paid **once** each year. Joining additional (secondary) chapters only requires paying chapter dues.

Chapter Name (or Independent): \_\_\_\_\_

If joining a secondary Chapter, provide the Chapter name where BCHW dues have been paid for 2020: \_\_\_\_\_

Chapter Dues

PNC is \$9 single & \$11 family \$ \_\_\_\_\_

Additional Chapter Donation \$ \_\_\_\_\_

Chapter Subtotal \$ \_\_\_\_\_

**Grand Total (State+Chapter)** \$ \_\_\_\_\_

## LIABILITY RELEASE & NOTICES

All ADULT members MUST sign! Adult's signature covers minor children.

Recognizing the fact that there is a potential for an accident wherever horse use is involved, which can cause injuries to horses, riders, and spectators, and also recognizing the fact that Back Country Horsemen of Washington, including Chapters, officers, directors, or members, cannot always know the condition of trails or the experience levels of riders or horses taking part in trail rides or other BCHW events, I do hereby release and hold harmless the above named from any claim or right for damages which might occur to me, my minor children, or horses.

By signing this application I agree to receive notices from BCH by electronic transmission at the above email address.

Signature: \_\_\_\_\_ Date: \_\_\_\_\_

Signature: \_\_\_\_\_ Date: \_\_\_\_\_

Signature: \_\_\_\_\_ Date: \_\_\_\_\_

Back Country Horsemen of Washington (BCHW) is a public charity as defined in Internal Revenue Code Section 501(c) (3). Accordingly, membership dues paid to BCHW may be treated as deductions characterized as “charitable contributions” when computing federal and state income tax obligations.